

Facades available:

Lachlan, Barrington, Flinders

Cooper, Nepean

Overall home width 12.59m

Overall home length 18.23m

Residence 160.6m² 17.3sq

Garage 36.3m² 3.9sq

Porch 6.1m² 0.7sq

Total 202.9m² 21.9sq

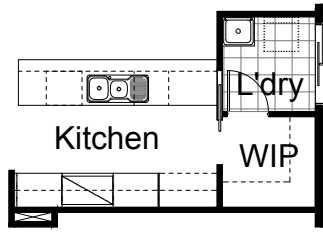
Listed details based on Lachlan facade floorplan (illustrated)

FLOORPLAN OPTIONS

We personalise our floorplans. Talk to us about our huge range of ready-to-go design options.

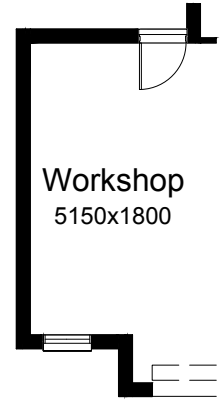
OPTION K1

Provide Kitchen upgrade including increase WIP by 100mm and reduce Family. Provide 1no. laminated open shelf above refrigerator space, 3no. 800mm base cupboards, 2no. 800mm overhead cupboards, 900mm under bench oven with retractable rangehood, 1no. laminated DW provision, 1no. laminated MW provision with pot drawer below, 1no. 450mm drawers, 1no. 900mm base cupboard, 1no. 820mm cavity sliding door to WIP in lieu of standard 620mm flush panel hinged door, additional bench top and tiled splash back to suit and relocate Laundry flush panel hinged door to suit.



OPTION G2

Provide extension to Garage to create Workshop area including additional AAWF2009 window to suit. Increases length by 1800mm. Increases area by 10.13m².



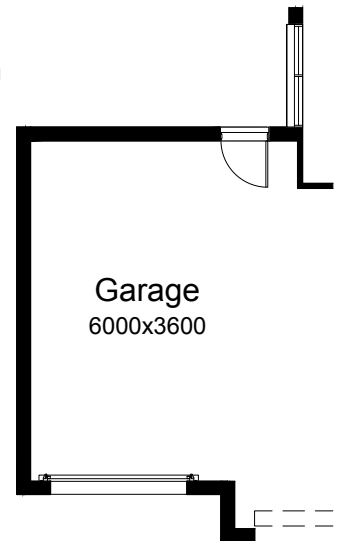
OPTION LD1

Provide Laundry upgrade with laminated insert trough, 1no. 800mm base cupboard, 1no. 800mm overhead cupboard and additional tiled splash back and bench top to suit.



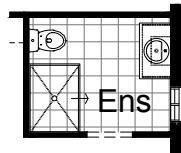
OPTION G3

Provide triple car Garage including additional Garage door as per colour selection. Increases area by 24.26m². Increases width by 3600mm.



OPTION ENS1

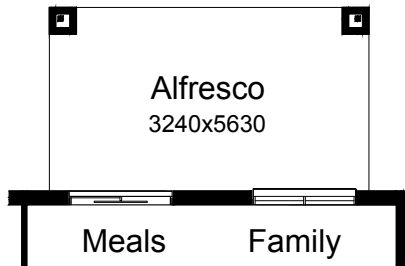
Provide Ensuite upgrade with 900mm x 1220mm tiled shower base in lieu of standard 900mm x 900mm tiled shower base and 1no. 2057mm x 610mm aluminium sliding window in lieu of standard 1027mm x 610mm aluminium sliding window and relocate vanity and WC to suit.



Note
This option cannot be chosen with Option ENS2

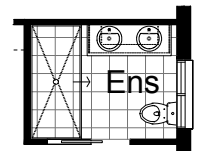
OPTION EP1

Provide Alfresco Option under dwelling roof line with structural concrete floor and additional 2/470mm x 470mm brick piers to rear of Family/Meals. Increases area by 18.24m². Increases length by 3240mm.



OPTION ENS2

Provide Ensuite upgrade with additional wall to wall tiled shower base, 1no. 1482mm wide vanity unit with 2no. basins in lieu of standard, relocate WC to suit, provide additional 1no. 1027mm x 1210mm aluminium sliding window in lieu of standard and 1no. 720mm sliding door to Ensuite in lieu of hinged door and Increase Ensuite width by 100mm and decrease WIR to suit.



Note
This option cannot be chosen with Option ENS1

OPTION G1

Provide extension to Garage to create additional Storage area. Increases area by 4.58m². Increases width by 850mm.



OPTION IP1

Provide Jetmaster SL-350 gas fireplace, 400mm off floor level in a 1400mm x 420mm boxed out plaster wall with a 4 sided black fascia to Lounge room side wall with additional 2no. 2057mm x 610mm aluminium sliding window in lieu of standard 1no. 2057mm x 1810mm window.

